

NetPlay Terminal NP-100 Setup Instructions

Table Of Content

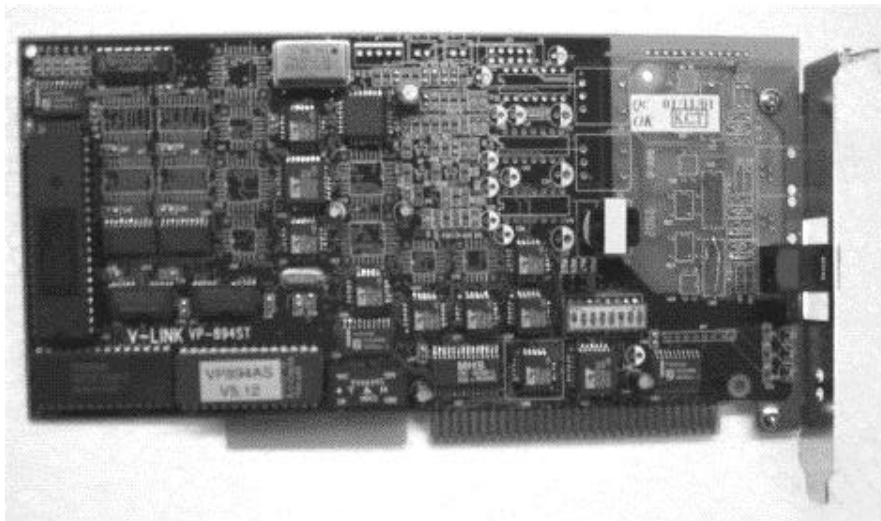
VP-894P Board Picture	2
VP-894P Board Configuration.....	3
IRQ.....	3
DIP Switch Settings	3
VRP-116 Voice Adaptor Connection.....	4
Network Environment Configuration	5
Software Installation	11
Software Operation	11
Q&A.....	13

The NP-100 NetPlay terminal is a network-based voice replay system for the Archivist voice logging recorders (VLR). It consists of a half-sized VP-894P voice card , a VRP116 speaker , and the software to be installed on a Windows 95/98/NT/2000 platform with 10 Base local area network (LAN) interface.

Connected to the VLR main system via a LAN, a NetPlay Terminal can search, browse and replay any voice records stored in the VLR system.

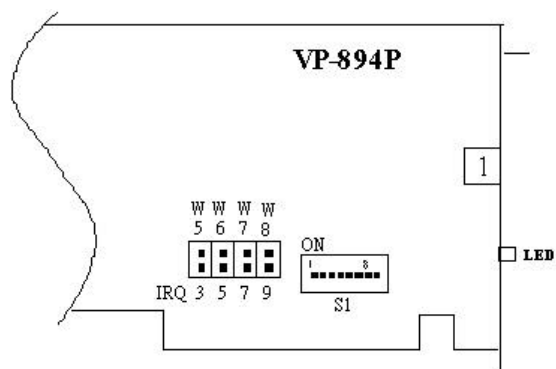
The following section gives detailed assembly instructions on the NetPlay kit. It may be skipped for users who receive the NetPlay Terminal already assembled.

VP-894P Board Picture



VP-894P Board Configuration

The VP-894P voice card must be properly configured before being installed into an IBM compatible PC. The following diagram shows the key components on the VP-894P.



IRQ

Use the IRQ selection jumper to select an interrupt level of 3,5,7 or 9. This IRQ must be made available to the ISA bus in the system BIOS configuration, and must not be used by any other devices. The default setting is 7.

DIP Switch Settings

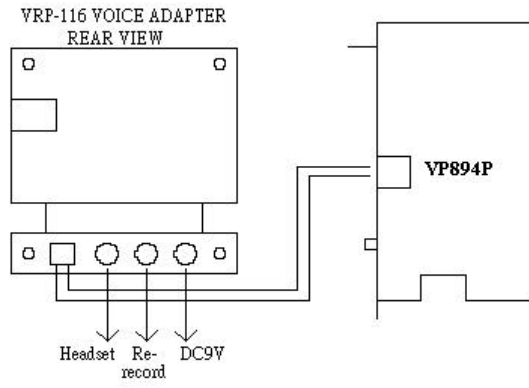
S1-1 should be set to ON and **S1-2 to S1-5** set to OFF.

S1-6 to S1-8 determines the memory address according to the following diagram.

The default setting is E000.

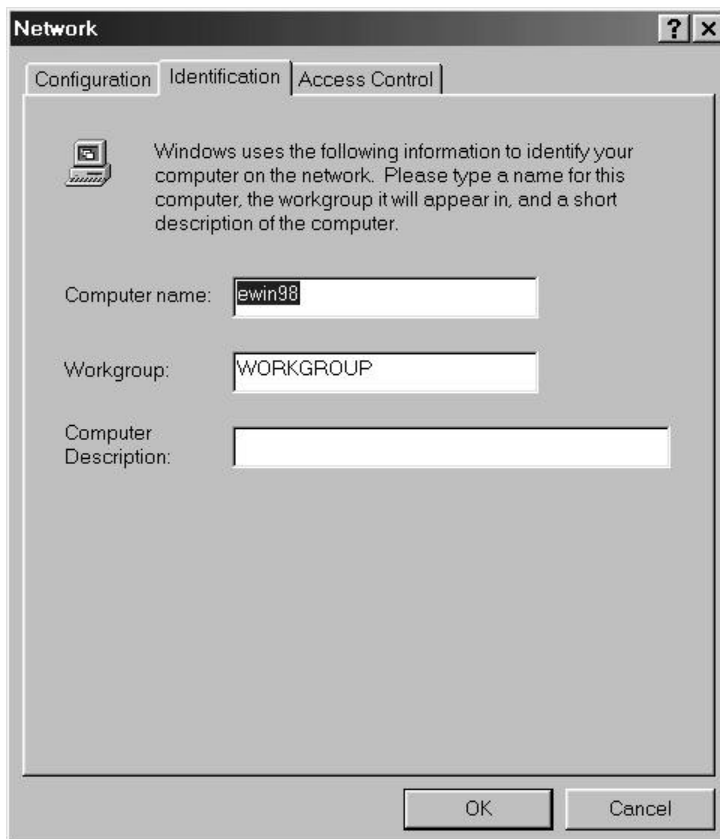
S1-6	S1-7	S1-8	I/O ADDRESS
OFF	OFF	OFF	C000 ~ C7FF
OFF	OFF	ON	C800 ~ CFFF
OFF	ON	OFF	D000 ~ D7FF
OFF	ON	ON	D800 ~ DFFF
ON	OFF	OFF	E000 ~ E7FF
ON	OFF	ON	E800 ~ EFFF
ON	ON	OFF	A000 ~ A7FF
ON	ON	ON	A800 ~ AFFF

VRP-116 Voice Adaptor Connection



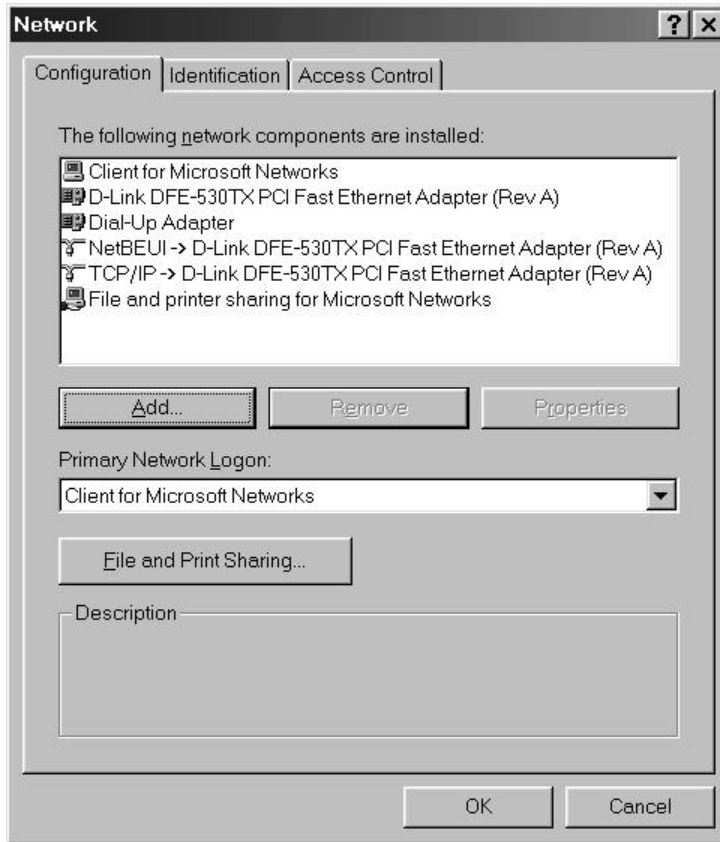
Network Environment Configuration

1. Install a network card into the NetPlay Terminal if there is not one already. Refer to the network card's manual for installation instructions.
2. Select Control Panel > Network > Configuration > Add > Client > Add > Microsoft > Client for Microsoft Networks and make sure that the network card is present. Add the NetBEUI and TCP/IP protocol. Click on "File and Print Sharing" and check the box for "...access to my files".
3. Select Control Panel > Network > Identification and enter "Computer Name" and "Workgroup". Note that the Computer Name should be unique. The VLR main unit and the NP-100 system should be in the same workgroup.



4. Select Control Panel > Network > Access Control and check the box for "Share-level access control".

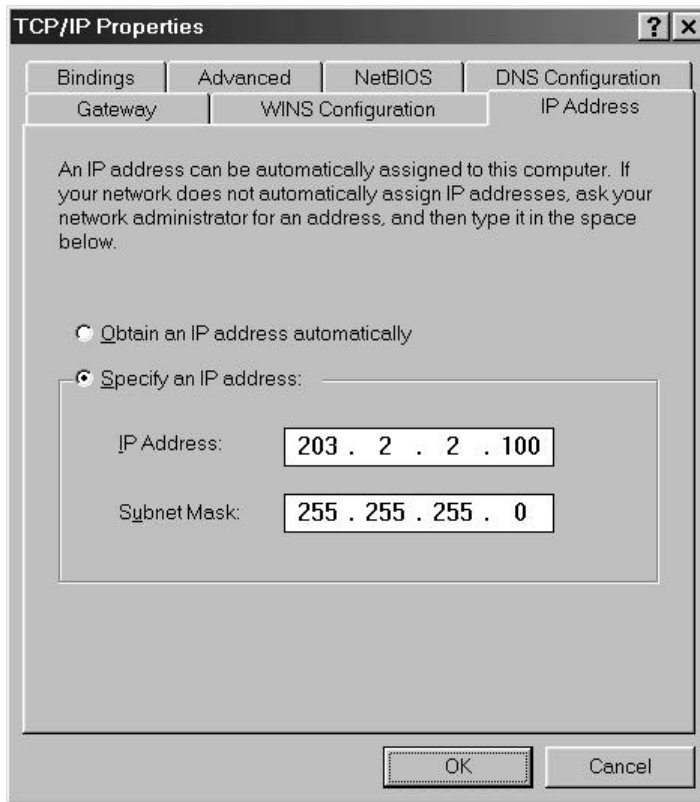
5. Make sure the following Network Components are installed properly.



6. Select Control Panel > Network > TCP/IP, Then click Properties > IP Address and enter the following information.

IP Address: 203.2.2.100

Subnet Mask: 255.255.255.0



Also, change the IP Address of the main VLR system to:

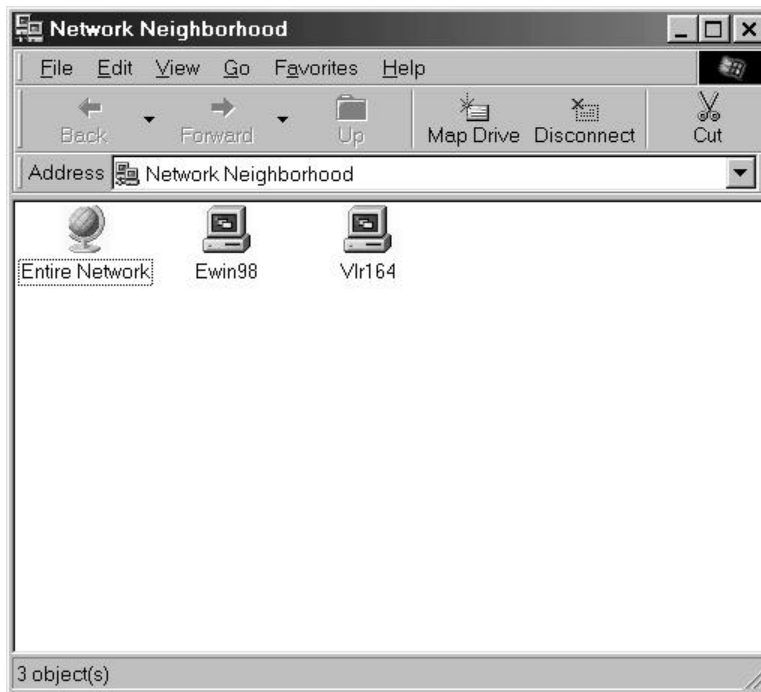
IP Address: 203.2.2.164

Subnet Mask: 255.255.255.0

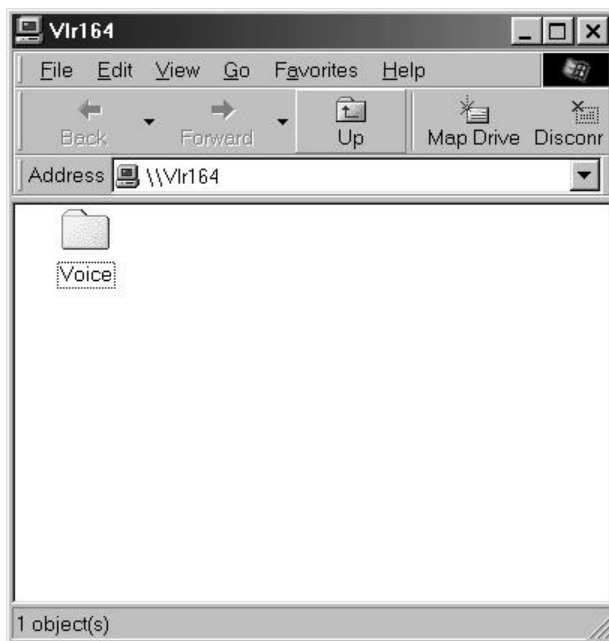
7. Configure the main VLR system as the following:

Right-click on the D: drive (the drive storing voice data) to be shared in My Computer and select Properties > Sharing. Click on "Shared As" and enter a Share Name (e.g. VOICE). Click OK to confirm.

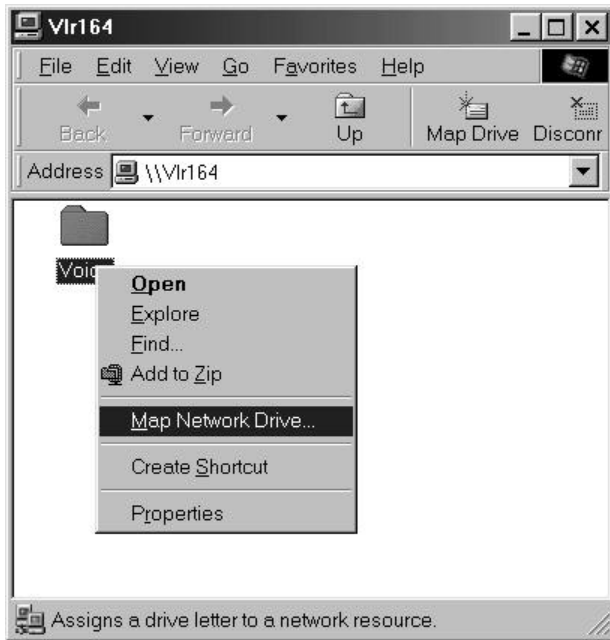
8. Double-Click on Network Neighborhood icon of the Netplay Terminal, and you should see the name of main VLR system, such as VLR 164.



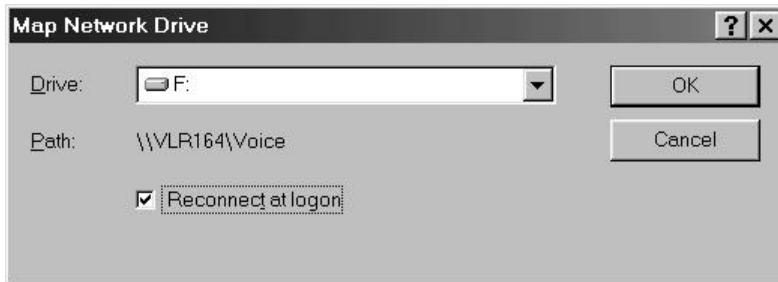
9. Double-Click the VLR icon and you will see the shared VOICE folder.



10. Right-Click on the VOICE folder, then select Map Network Drive to map the shared hard disk (VOICE) over the network into the system.



11. Click OK to continue.



12. If the mapping is successful, the hard disk will show up in My Computer.

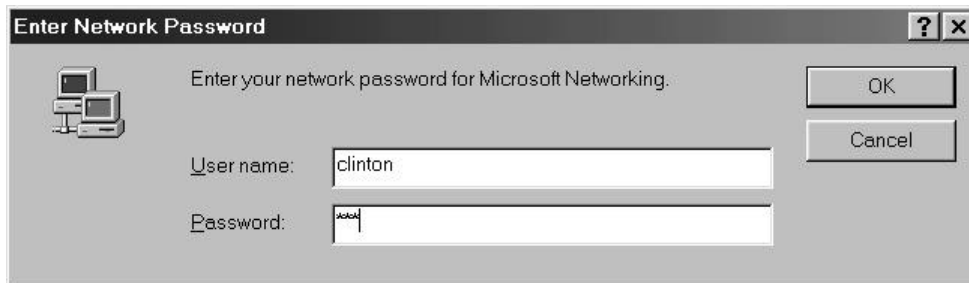


Software Installation

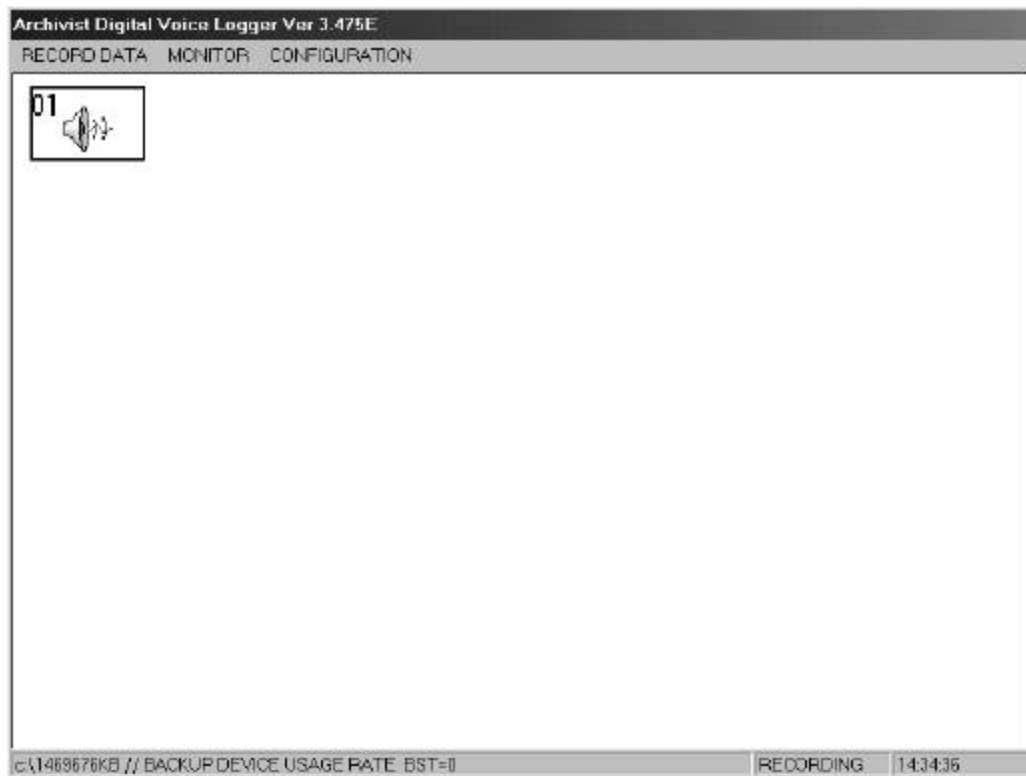
Run the SETUP.EXE program on the first diskette and follow the instructions on screen. Restart the NetPlay system.

Software Operation

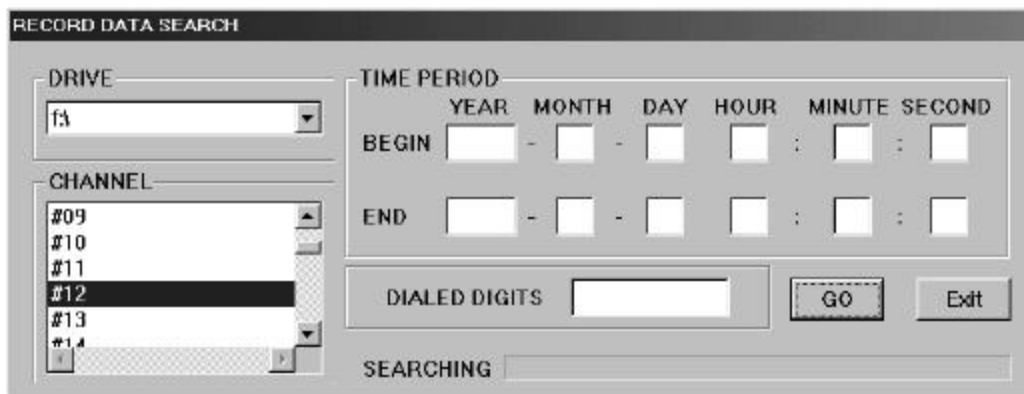
1. After the NetPlay system is restarted, you will need to log in by entering Username and Password. Please enter Administrator for Username, and 222 for Password. To add your own Username and Password, select Start > Programs > Administrator Tools > User Manager . After the new Username and Password are added, you can use them to log in the system .



2. If log in is successful, the Netplay program will start.

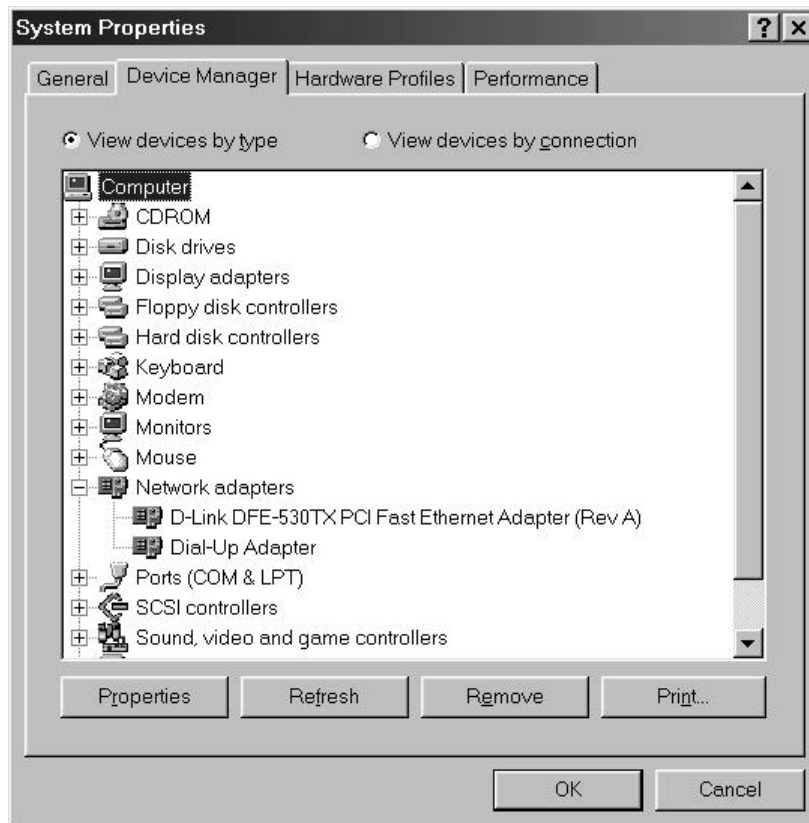


3. To search record data, select the proper drive and channel number.



Q&A

1. Can not find the VLR computer icon in Network Neighborhood.
 - A. Netplay and VLR must be in the same Workgroup and have different names.
 - B. The last number in IP Address must be different and no larger than 255. Also Subnet Mask must be the same.
 - C. Make sure the login name and password are correct.
 - D. Check and make sure there are no missing network components.
 - E. Right-Click My Computer icon and select Properties > Device Manager to check if the network adapter is working fine. If there is an “ ! “ sign on the network adapter , then its driver program is not installed properly.



2. Can not find the mapped drive icon in the Netplay program.
 - A. Double-click My Computer icon and check to see if the mapped drive is there.
 - B. Re-do the mapping and enable “ Reconnect at logon “.
 - C. Check and make sure all network cables are secure and tight.